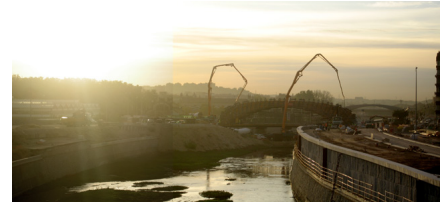


## CONSTRUCTION SECOND SHELL BRIDGE IS MOVING ALONG

24-11-2009



Construction is moving along at the second Shell Bridge (Puente Cascara), West 8+ MRIO designed for the City of Madrid. The shell of the first bridge was finished just weeks ago; the deck suspended by one hundred steel cables and the painted art work on the concave ceilings will be installed soon. In total there will be five bridges connecting the various park areas included in the masterplan, West 8+MRIO made for the reclaimed riverbanks and new urban area above the tunnels of the M30 motorway.

more information: [Cascara Bridges](#)