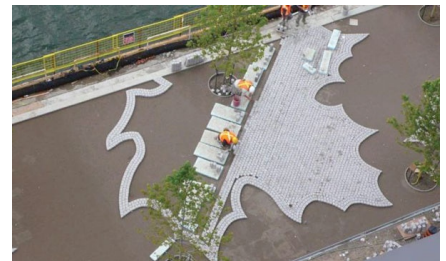
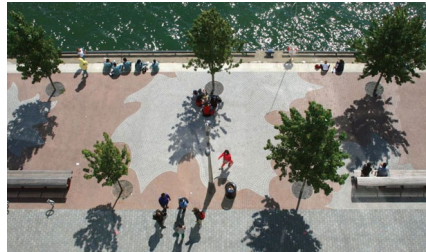


EAST BAYFRONT WATER'S EDGE PROMENADE WINS CSLA AWARD OF EXCELLENCE 2014

04-03-2014



On the 4th March, 2014, the Canadian Society of Landscape Architects (**CSLA**) announced the national and regional winners of its annual Awards of Excellence. This year, 15 projects received a national award - they represent preeminent examples in Canadian landscape architecture, distinctive design, groundbreaking research, and sustainable landscape management. East Bayfront Water's Edge Promenade, a realized section of the Toronto Central Waterfront project, wins an Award of Excellence, in the 2014 **National Merit** category.

In 2006 **West 8 + DTAH** won the Central Waterfront Innovation Design Competition with a mandate to transform Toronto's waterfront into a world-class destination celebrating the Canadian lakefront experience. As lead consultants, West 8 + DTAH were responsible for the co-ordination of sub-consultants, design development, working drawings and contract administration.

Unique to the project are the high quality, custom designed paving, furniture and tree planting details all inspired by the Canada's iconic maple leaf. West 8 + DTAH worked closely with the contractors on site, collaborating on pavement mock-ups and fabrication of benches and lights. Extensive underground work, including soil cells, passive irrigation, and root aeration technology were also installed in combination with utility trenches and dock wall reinforcement.

The first phase of the promenade is part of a growing waterfront network, 925m long and 9.4m wide, it consists of a mosaic of granite pavers with a double row of Maple trees and a family of custom designed furniture. An additional 9m wide pedestrian zone of concrete unit pavers runs parallel to the promenade, creating a total of 18.4m of public space between nearby buildings and the Lake. Patio seating spills across the pedestrian zone from George Brown College with commercial activity transitioning onto the promenade.

Today, the East Bayfront Water's Edge Promenade is an active civic space and a successful precedent project for future development along Toronto's waterfront. Flanked by two parks, the promenade is a pedestrian and cycling route, and a year-round venue for a variety of public events. The promenade design is an elegant interpretation of a Canadian themed public space at the water's edge.

The CSLA Awards of Excellence celebrate work that is inspiring, exhilarating, and remarkably diverse. Each year, jurors select exceptional projects across many areas of expertise. For more info please visit www.csla-aapc.ca.

more information: [Toronto Central Waterfront](#)