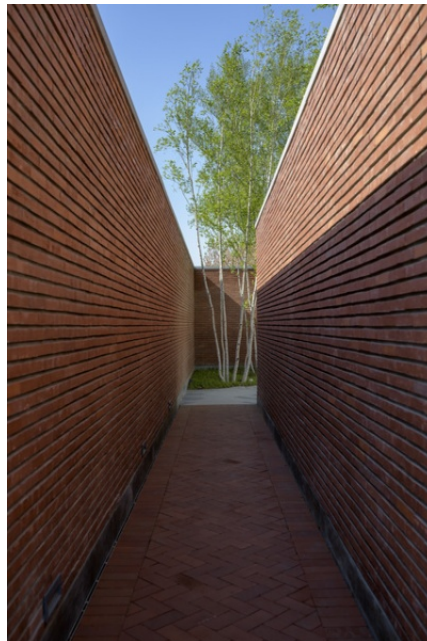
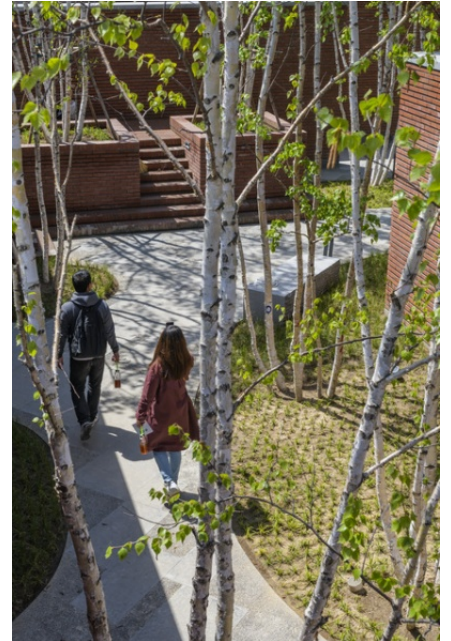
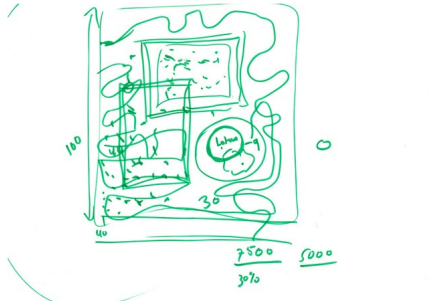
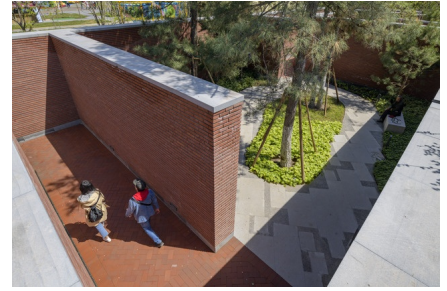


GARDEN OF TIME

2017 ongoing, Beijing, China





"Garden of Time": Designed by the Dutch landscape architecture firm West8 led by Adriaan Geuze. The typical red bricks of North China extend along the long corridor that leads people into three immersive courtyards. The "Yunzhong Garden" under the canopy of the pine trees creating shadows to the verdant ground cover; the "Shaohua Garden" with the rain of falling petals and the splashing water drops of the wet rocks; the "Qieqi Garden" with the whispering wind through the birch trees and the waving grasses. The variety of plant combinations create different atmospheres that evoke sparkling memories of moments of our life.

"Garden of Time" is exhibiting at the Beijing International Horticultural Exposition 2019 until mid next year.

client

Beijing Forestry University, Landscape Architecture Journal China (北京林业大学园林学院)

team

Christian Dobrick, Adriaan Geuze, Yichun He, Alberto Gonzalez-Garcés, Anni Lei, Perry Maas