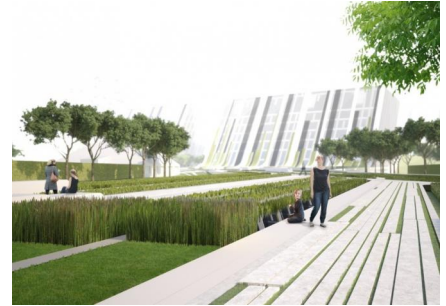


# KOUDEKERKE, KNOCKE HEIST

2012, Knokke, Belgium



This design is a dynamic composition of volumes with tilting façade patterns, which seamlessly flow into a streamlined, public parkland. The flowing lines form an expanding and confluent pattern that refers to the fluidity of water, waves cause by wind and the topography of nearby dunes. The park landscape is an essential and integral part of the project and the continuity between façade and landscape is the focus. The dynamic lines consist of glazed areas, green areas, water surfaces and concrete elements and run continuously from façade into the landscape and vice versa. The characteristic linearity organizes all visible elements in the landscape, as well as furniture and lighting.

## partners

Zaha Hadid Architects, Bureau Bouwtechniek

## team

Adriaan Geuze, Maarten van de Voorde, Pieter Hoen, Jan Nijs, Ronald van Nugteren