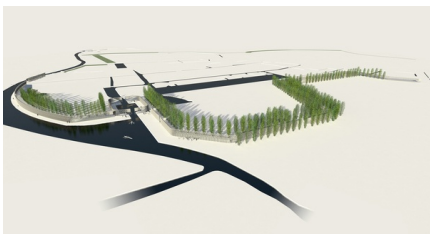


# MáXIMAPARK

1997 ongoing, Leidsche Rijn, The Netherlands





The design for Máximapark (formerly known as Leidsche Rijn Park) was the outcome of a design competition held in 1997. The concept for the park, to be constructed in a new residential district of 35.000 homes to the west of Utrecht, is based on creating three 'edges' that shield the park from its suburban surroundings.

The edges consist of a re-excavated meander of the River Rhine, a nine-kilometer long ecological zone and a four kilometer long [pergola](#) around the core of the park.

The core is a 50-hectare green courtyard, called 'Binnenhof'. It contains woods, water courses, pedestrian areas, playground and formal avenues which create a secluded green inner world that can be entered only through gateways. The surrounding six meter high pergola is a fauna wall, which will attract all kinds of animals and plants, thus creating its own miniature ecosystem. There is a cemetery also, that lies on higher grounds surrounded by water and the pergola.

Surrounding the core are sports fields, allotment gardens and other facilities which are linked by a linear park of flowery meadows, 'The Jac P. Thijssse Ribbon'. Hikers, cyclists and skaters can move through this circuit park over a track that offers them constantly changing perspectives.

The park is essential to counterbalance the inescapable sea of houses and puts its mono-functional character into perspective. Above all the park will offer a factor of growth. With its consciously chosen long-term lifecycle it will grow beyond the eternal youth of the suburban environment.

More information about the Parkpergola please see: [Park pergola](#)

#### client

Project Bureau Leidsche Rijn

#### partners

DESCRIPTION OF PARTNERSHIP: The design of the park is a commission by the municipality of Utrecht. To organize the process and realize the park the municipality has created an leading office (Project Bureau Leidsche Rijn). This office makes use of consultants, that advices on certain issues (ecology, maintenance etc.).

#### team

Edzo Bindels, Adriaan Geuze, Robert Schütte, Rikus Beekman, Martin Biewenga, Freek Boerwinkel, Maarten Buijs, Cyrus Clark, Fritz Coetzee, Jeroen de Willigen, Joost Emmerik, Gaspard Estourgie, Joris Hekkenberg, Pieter Hoen, Joost Koningen, Esther Kruit, Perry Maas, Ard Middeldorp, Nigel Sampey, Kees Schoot, Jacco Stuy, Jelle Therry, Edwin van der Hoeven, Ronald van Nugteren