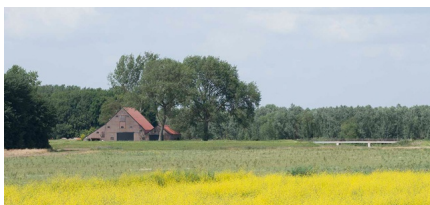
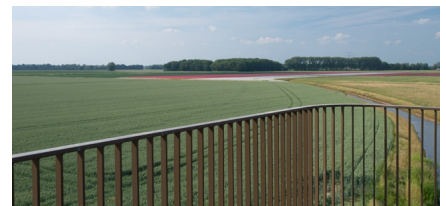
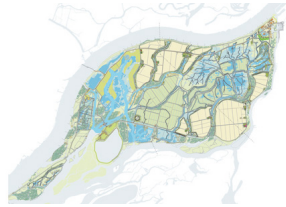


# THE BRIDGES AND PUMPING STATIONS OF NOORDWAARD

2011-2016, Noordwaard, The Netherlands



The Noordwaard polder is one of the key areas of the National Dutch project [Ruimte voor de Rivier](#) (Room for the River). This polder is one of 39 locations holding great strategic significance for the water management of the main rivers of The Netherlands and thus for the safety of more than 4 million people. By lowering the dike of the Noordwaard polder the area will become subject to controlled inundation and function as a dedicated water detention district.

West 8, in collaboration with IPV Delft, has designed the 33 bridges and 13 pumping-stations for the new Noordwaard area. The bridges, which are

spread across an area of 4450 hectares include 24 Creek Bridges, 6 Dike (embankment) Bridges and 3 Steurgat Bridges.

The seemingly simple appearance and gentle curvature of the bridges elevates them above both the horizon and is designed in keeping with the understated beauty of the Dutch pastoral landscape. Sleek and sober detailing, special bronze finishes and the bird sticks give the bridges their unique character.

The pumping stations, the most vertical elements in the landscape, are mainly constructed from the bricks of demolished farmhouses and in three instances are designed as viewing platforms. These platforms offer arresting 360 degree panoramas of this new landscape typology.

[Depoldering Noordwaard](#) video on [Vimeo](#) posted by © [IPV Delft](#)

#### client

Rijkswaterstaat

#### partners

Boskalis, Martens en van Oord, van Hattem en Blankevoort, Gebr. van Kessel, ipv Delft

#### awards

Landezine International Landscape Award (LILA), Infrastructure Category (2019)

#### team

Gaspard Estourgie, Adriaan Geuze, Maarten van de Voorde, Eduard Balcells, Pieter Hoen, Zhongwei Li, Perry Maas, Igor Saitov, Ronald van Nugteren, Shachar Zur