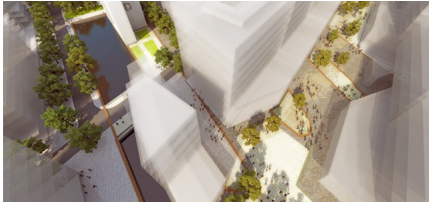


# SILVERTOWN QUAYS

2013 ongoing, London, United Kingdom



The Silvertown Quays development is a dense mixed used commercial, office and residential redevelopment surrounding the former Pontoon Dock adjacent to Royal Victoria Dock. Historically the Royal Docks have been a gateway between London and its global markets. When the docks were closed for industrial purposes in the 1980s, the area lost its economic rationale. The urban landscape became blighted by large chunks of vacant brown fields, with poor access, dereliction and contamination. Existing and new community developments were isolated, fractured and economically deprived.

To redefine the eastern docklands, not as somewhere at the edge of London but as a new piece of the city, with its own centre of gravity and with a clear identity of its own, West 8, in the role of landscape architect and urban designer, joined the team led by lead masterplanner Fletcher Priest Architects, to revive the vitality with a 25ha. vibrant urban quarter. The area, will consist of 3000 new homes, cultural premises, offices and high-end branding and retail.

The team intends to transform the site into a world-class business centre: a world-leader in high technology, green enterprise and research and an international forum for the exchange of knowledge and ideas. The waterfront site is envisaged as a hub of activity and a thriving leisure destination for Londoners and visitors alike.

The landscape strategy includes the establishment of a range of focal districts, linked by key open spaces at the junction of main routes and streets. New iconic public spaces include squares, parks, plazas, the Dock and the waterfront promenade. Also various smaller public spaces, all situated at strategically arranged positions, help define the new urban experience and create a sense of place and act as lively junctions for users of the variously programmed surrounding development blocks.

For more details please see also the official website of the project [here](#).

## client

Silvertown Partnership (First Base & Lipton Rogers Developments LLP)

## partners

Fletcher Priest Architects, Arup, Civic Arts

## team

Maarten Buijs, Adriaan Geuze, Rikus Beekman, Janneke Eggink, Igor Saitov, Yu Shi, Marco van der Pluym, Harrie van Oorschot, Ben Wegdam