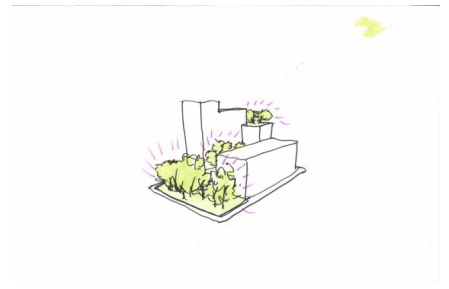
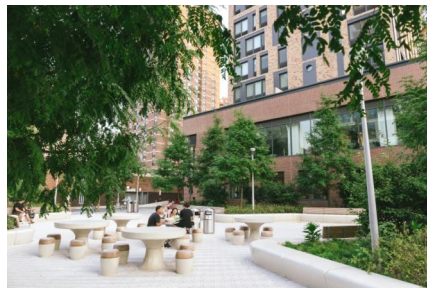


# THE PARK AT ESSEX CROSSING

New York, USA



The design for the Park at Essex Crossing provides a refined, shaded oasis in the heart of Manhattan's Lower East Side. As the marquee park within the six-acre, 1.9 million square foot Essex Crossing Development (formerly SPURA), this park is poised to become an essential and beloved open space for the emerging neighborhood over the next decade.

One of the largest urban developments in the history of New York City, the Essex Crossing development will transform vacant lots and surface parking into a vibrant neighborhood with the Park, completed during phase 1, at its heart.

With a few simple moves, the Park at Essex Crossing delivers a calm, verdant, island within the urban fabric. An entirely native palette of trees and groundcovers are located in raised planters around a central open plaza. Picking up on the Lower East Side's history of beloved urban gardens, the Park design layers canopy and understory trees, swaths of woodland planting, and vine-covered vertical plantings to create a woodland garden in the city. Meandering geometries and an oblong central gathering area gives the illusion and opportunities of a larger park, while also offering flexibility for small events and performances to occur simultaneously.

At the southwest of the site, younger visitors will discover a child-sized ravine to explore and climb, with challenging rope crossings allowing for boundless exploration and interactive play. Multifunctional planter edges offer seating throughout the park, with robust wooden details that are both comfortable and offer a soft antidote to the typical glass and steel of the city. A community table area at the Broome Street edge offers seating for larger groups or the opportunity for families to sit gather a table in the Park.

Please visit the [Essex Crossing](#) website for more information.

client

Delancey Street Partnership

partners

Beyer Blinder Belle

consultants

AKRF, Rodkin Cardinale Consulting Engineers, DeSimone Consulting Engineers, Illumination Arts

awards

ULI-NY's Excellence in Mixed-Use Development Award

team

Claire Agre, Steve Carlucci, Adriaan Geuze, Jamie Maslyn Larson, Ashley Schwemmer, Daniel Vasini, Sofia Charro, David Hanrahan, Kurt Marsh, John Payne