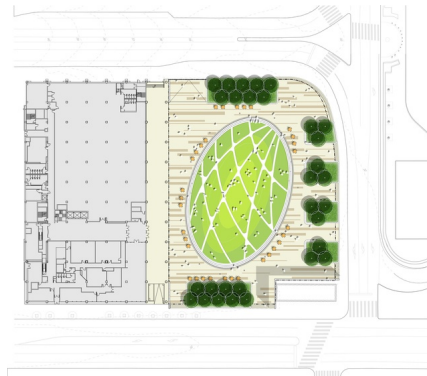
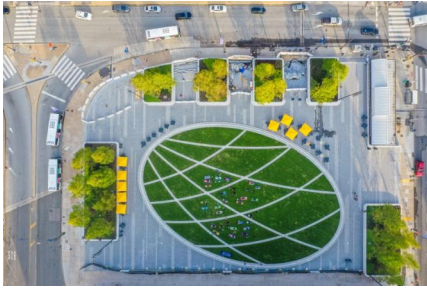


## DREXEL SQUARE

2016 ongoing, Philadelphia, United States



The future 1.3-acre Drexel Square at 3001 Market Street, is an elliptical park designed by SHoP and West 8, together with Drexel University and master developer Brandywine Realty Trust. It is the first project broke ground about 18 months after the city's announcement of the vision plans to transform 14 acres site in Drexel University City into a leading innovation hub, namely [Schuylkill Yards](#).

The green space replaces what's currently a parking lot across the street from 30th Street Station. This centerpiece is the “launchpad” for Drexel Innovation Neighborhood.

SHoP and West 8 designed the Drexel Square that represents the continuation of William Penn’s original vision for the city’s “public room”; a place for the people to gather, rest, and be renewed by the natural world. At its core, Schuylkill Yards is centered on human interaction; a place that encourages walking, meeting, shared experiences, collaboration, and engagement. This vision will manifest itself through the transformation of the two iconic Philadelphia streets that anchor the neighborhood — JFK Boulevard and Market Street.

Serving as the gateway into University City from Center City and 30th Street Station, Drexel Square is punctuated by an elliptical-shaped public green

space in front of the Bulletin Building. Along with a more than 12,000 SF elliptical green lawn, the team also designed custom made granite benches, outdoor furniture, lighting, and raised planter beds filled with shrubs and perennials. Other key features include the 30 mature Dawn Redwood trees which have been planted at more than 25 feet tall.

client

Drexel University and Brandywine Realty Trust

partners

SHoP Architects

team

Donna Bridgeman, Adriaan Geuze, Claire Agre, Freek Boerwinkel, Douglas Brooks, Agostino Bubbico, Sofia Charro, Lisa DuRussel, Steven Lee, Perry Maas, Jelle Therry, Daniel Vasini